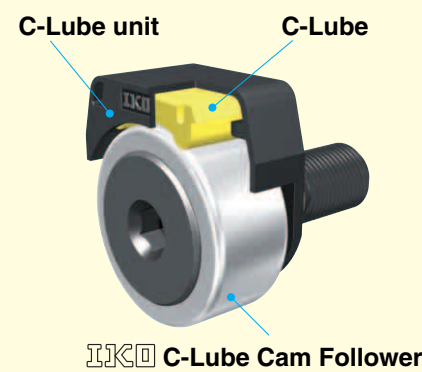
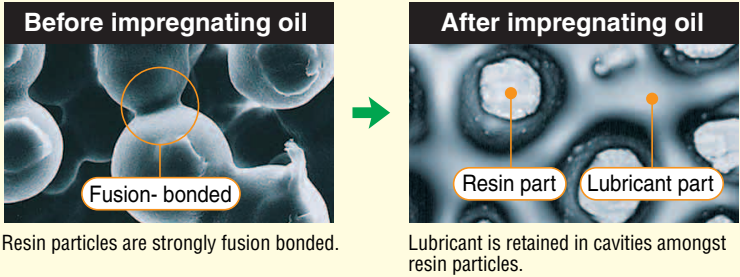


# C-Lube Unit for Cam Followers

## Structure of C-Lube Unit for Cam Followers

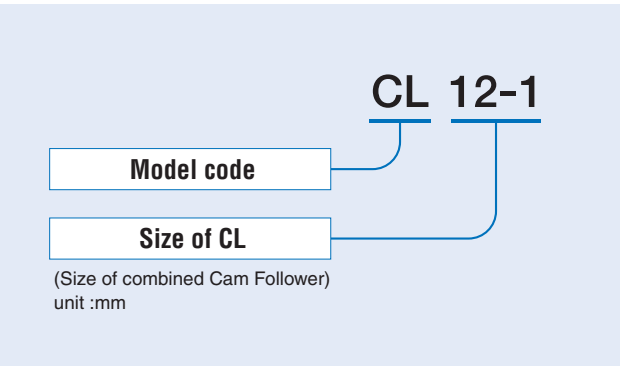


### Magnified photos of C-Lube



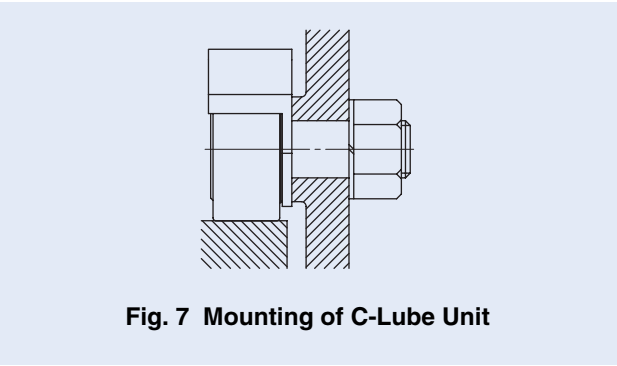
### Identification number

The identification number example of IKO C-Lube Unit is shown below.



### Mounting

① Set the C-Lube Unit perpendicularly to the center axis of Cam Follower and fix together with Cam Follower by tightening nut.



### Allowable rotation speed

The rotation speed of IKO Cam Follower with C-Lube Unit should not exceed  $d_1 n = 10,000$  for reference.

$$d_1 n = d_1 \times n$$

$d_1$ : Stud diameter of Cam Follower, mm  
 $n$ : Rotational speed, rpm

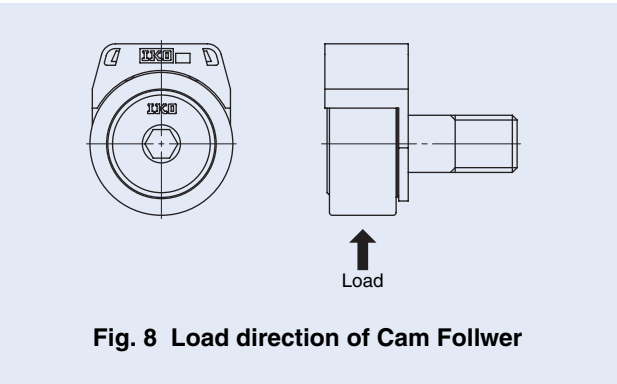
### Minimum rotational angle

Lubricating oil is supplied to the whole external diameter surface of the outer ring. Accordingly, use the product in a condition in which the outer ring makes one or more turns.

### Operating temperature

Allowable operating temperature range of IKO Cam Follower with C-Lube Unit is -15 to 80°C.

② Position of C-Lube Unit is adjustable. C-Lube Unit must be positioned avoiding loading direction.



③ When tightening the nut, the tightening torque should not be exceeded the value maximum tightening torque on dimension table. In case loosening of the nut is predicted due to vibration, using lock nut, spring washer and other special washer are recommended.

Table 22 Dimensions of C-Lube Unit for Cam Followers

Model number	Boundary Dimensions mm				Applicable Cam Followers		
	$W$	$H$	$T$	$t_1$	Model number <sup>(1)</sup>	Boundary Dimensions mm $D$	$B_{max}$
CL 6	15.4	12.6	14	1.5	CF 6 B	16	12.2
CL 8	18.4	14.2	14	1.5	CF 8 B	19	12.2
CL 10	21	17	15.5	2	CF 10 B	22	13.2
CL 10-1	21	19.2	15.5	2	CF 10-1 B	26	13.2
CL 12	29	21	17.5	2	CF 12 B	30	15.2
CL 12-1	29	22	17.5	2	CF 12-1 B	32	15.2
CL 16	33.8	27.4	23.4	2.5	CF 16 B	35	19.6
CL 18	38.8	30.4	25.4	2.5	CF 18 B	40	21.6
CL 20	45.8	38.4	29.9	3	CF 20 B	52	25.6
CL 20-1	45.8	35.4	29.9	3	CF 20-1 B	47	25.6

Note<sup>(1)</sup> Only representative types shown in the table, but also applicable to the same size of Metric series, with thrust disk type, centralized lubrication type, C-Lube Cam Followers and Cylindrical Roller Cam Followers. Combine with C-Lube Cam Followers is strongly recommended for full maintenance free.

### For use

- ① The maximum allowable load on IKO Cam Follower with C-Lube Unit is, 80% of the maximum allowable load of the needle bearing.  
C-Lube Unit may be damaged and influenced to the smooth rotation and lubricating performance by excessive load.
- ② After assembling C-Lube Unit and Cam Followers in the machine, please confirm that C-Lube unit provides oil correctly to the track surface before actual operation.
- ③ Do not use in the environment which contamination of liquid and/or harmful foreign matter are expected.

- ④ Do not wash with organic solvent and/or white kerosene, which have the ability of removing fat nor leave them in contact with the above agents.
- ⑤ To ensure normal rotation of the Cam Follower, apply a load of 1% or over of the dynamic load rating at use.  
Also, the outer ring needs to be rotate over a revolution to supply lubricant on entire outer diameter surface.
- ⑥ Replace with new C-Lube Unit when inside oil finishes completely. Re-lubrication is not possible.
- ⑦ Do not apply a load onto the C-Lube Unit directly.